

## Sledge Hammers - DIN 6475

### Indestructible Handle

SHID-DIN

Sledge Hammers with an indestructible handle are designed for heavy demolition jobs

#### Handle

6 spring steel bars that run through the handle are locked with the hammer head using steel locking plates ensuring that the head never gets dislodged

Ergonomic rubber grip handle absorbs vibration and reduces fatigue

#### Head

Forged steel head is induction case hardened 50-58 HRC

Special bonding process ensures that the handle and head never get loose

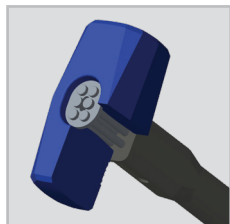
#### UTILITY

- Demolition
- Driving stakes & rebar
- Fracturing stone & concrete
- Driving fence posts
- Rail road
- Bending & shaping metal

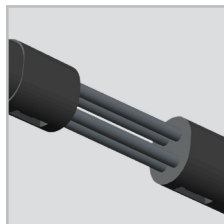


#### SPECIFICATIONS

WORKING TEMPERATURE RANGE	-10°C TO 50°C	14°F TO 122°F
---------------------------	---------------	---------------



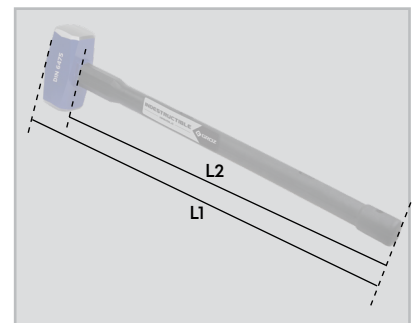
Steel Locking Plate



6 Spring Steel Bars



Ergonomic Rubber Grip Handle



#### ORDERING INFORMATION

CAT NR.	ORD NR.	HEAD WEIGHT		HANDLE LENGTH				BOX QTY.
				L1		L2		
		(GMS)	(KG)	(INCH)	(MM)	(INCH)	(MM)	
SHID/DIN/3K/24	34720	3000	3	24	600	22	550	4
SHID/DIN/5K/30	34721	5000	5	30	750	28	700	4

#### WARNING

Do not strike objects harder than 46 HRC. Striking items of a greater hardness is liable to cause fracture or chipping